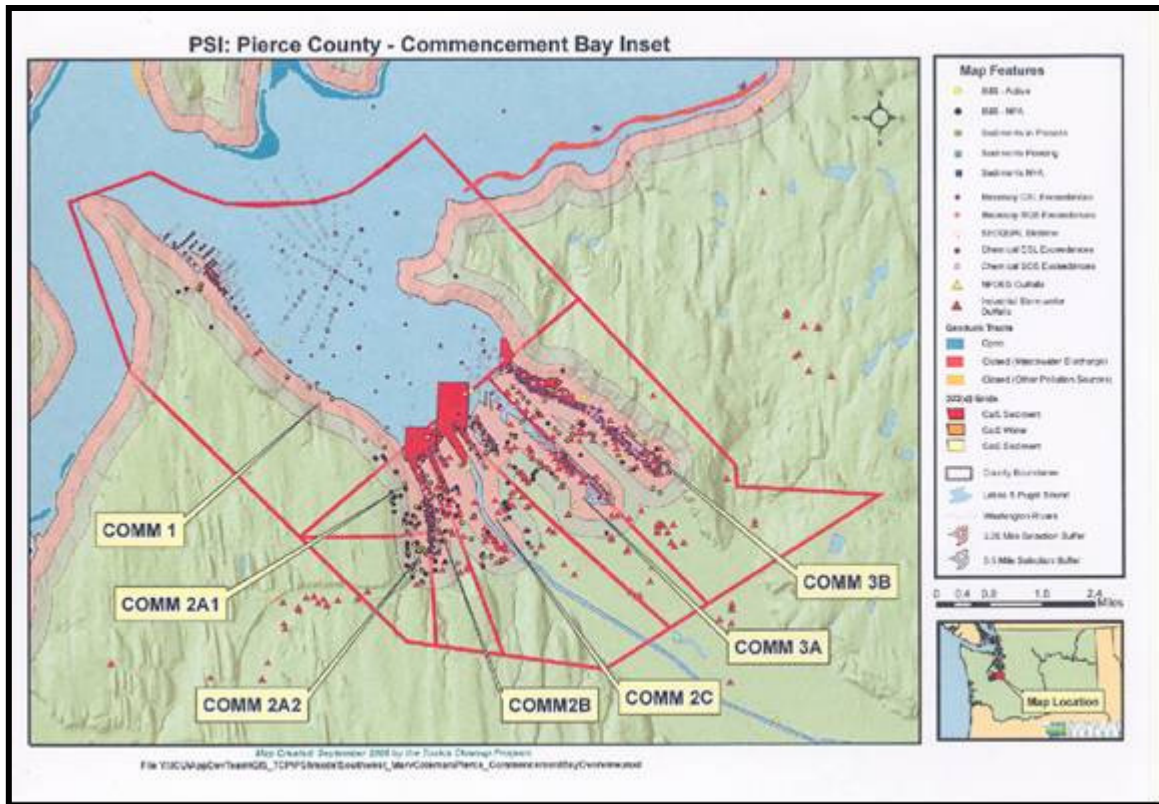


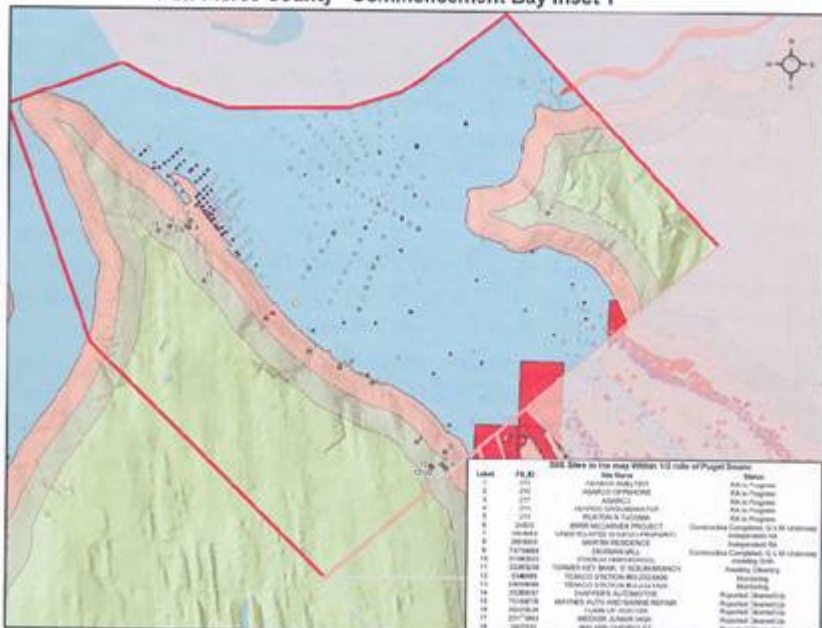
Commencement Bay Project

Ecology's overall goal is to identify the extent of the contamination and where the contamination is located. Once these are identified, a decision can be made about how to best deal with it. EPA placed the Commencement Bay site on the Superfund National Priorities List in 1983 due to widespread contamination of the water, sediments, and upland areas.

Few examples of contaminated sites located on Commencement Bay are as follows:



PSI: Pierce County - Commencement Bay Inset 1



- Map Features**
- Site - Active
 - Site - Inactive
 - Sediments in Process
 - Sediments Pending
 - Sediments MFA
 - Sewerage LID Existence
 - Sewerage TSS Existence
 - WETLAND Station
 - Chemical CTR Existence
 - Chemical BQS Existence
 - WQDES Outfalls
 - Industrial Effluent Outfalls
- Stream/Trails**
- Open
 - Closed (Wastewater Discharge)
 - Closed (Other Pollution Source)
- WQDES**
- C&D Sediment
 - C&D Water
 - C&D Sediment
- Other Features**
- County Boundaries
 - Lake & Puget Sound
 - Washington River
 - 0.25 Mile Sediment Buffer
 - 0.5 Mile Sediment Buffer

Site Name

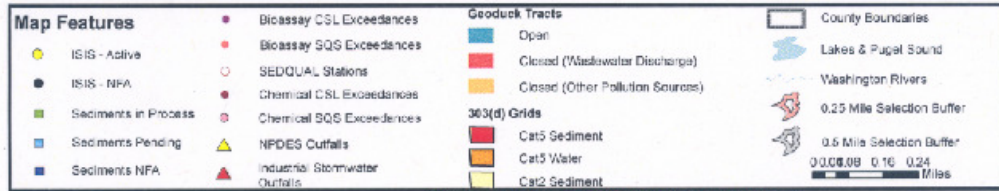
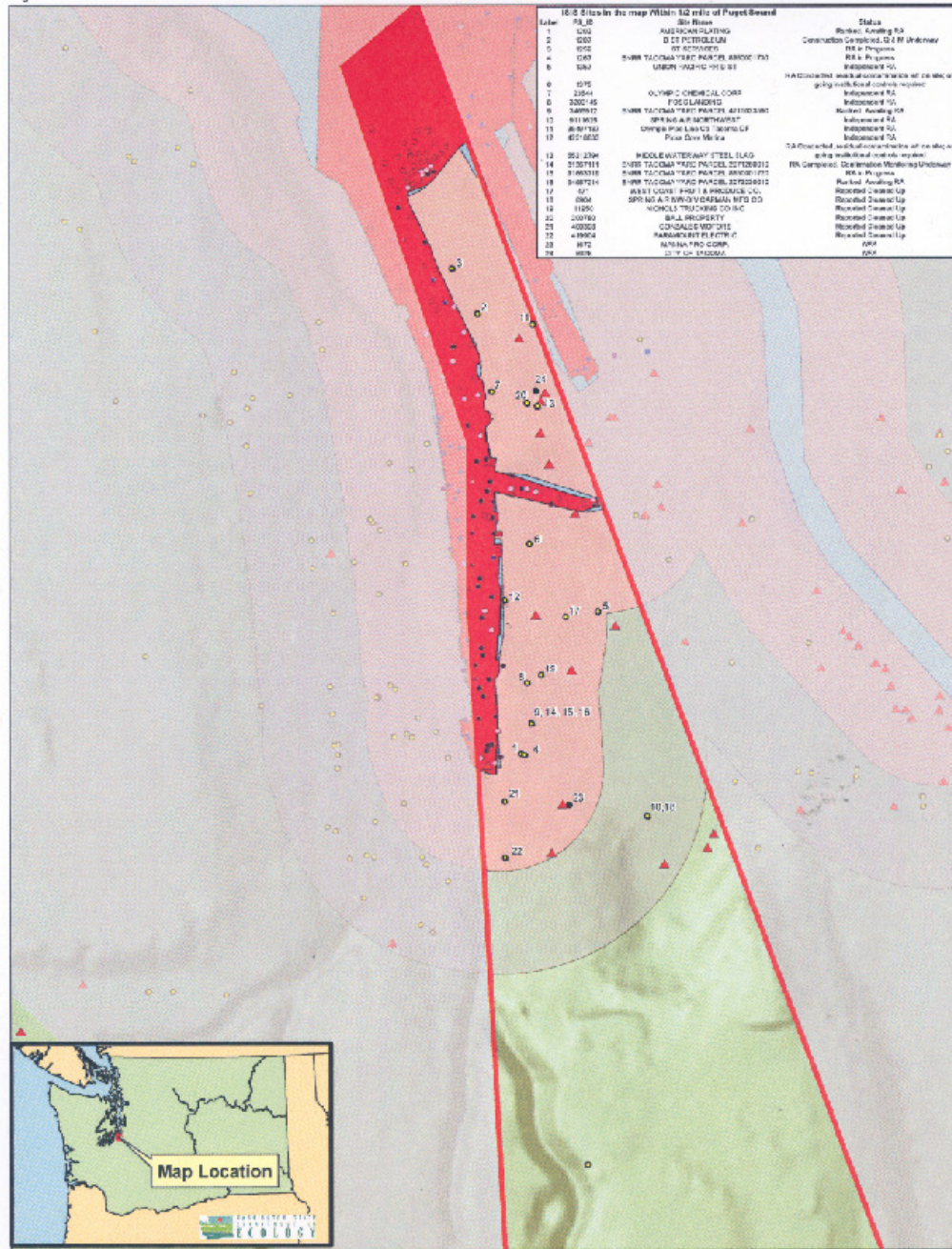
Label	File ID	Site Name	Status
1	101	ANDERSON BAY TST	RA in Progress
2	102	ARADIS OFFSHORE	RA in Progress
3	103	ARADIS	RA in Progress
4	104	ARADIS SOUTHSEA P&I	RA in Progress
5	105	ARADIS SOUTHWEST	RA in Progress
6	106	ARADIS WEST	RA in Progress
7	107	ARADIS EAST	RA in Progress
8	108	ARADIS NORTH	RA in Progress
9	109	ARADIS SOUTH	RA in Progress
10	110	ARADIS WEST	RA in Progress
11	111	ARADIS EAST	RA in Progress
12	112	ARADIS NORTH	RA in Progress
13	113	ARADIS SOUTH	RA in Progress
14	114	ARADIS WEST	RA in Progress
15	115	ARADIS EAST	RA in Progress
16	116	ARADIS NORTH	RA in Progress
17	117	ARADIS SOUTH	RA in Progress
18	118	ARADIS WEST	RA in Progress
19	119	ARADIS EAST	RA in Progress
20	120	ARADIS NORTH	RA in Progress
21	121	ARADIS SOUTH	RA in Progress
22	122	ARADIS WEST	RA in Progress
23	123	ARADIS EAST	RA in Progress
24	124	ARADIS NORTH	RA in Progress
25	125	ARADIS SOUTH	RA in Progress
26	126	ARADIS WEST	RA in Progress
27	127	ARADIS EAST	RA in Progress
28	128	ARADIS NORTH	RA in Progress
29	129	ARADIS SOUTH	RA in Progress
30	130	ARADIS WEST	RA in Progress
31	131	ARADIS EAST	RA in Progress
32	132	ARADIS NORTH	RA in Progress
33	133	ARADIS SOUTH	RA in Progress
34	134	ARADIS WEST	RA in Progress
35	135	ARADIS EAST	RA in Progress
36	136	ARADIS NORTH	RA in Progress
37	137	ARADIS SOUTH	RA in Progress
38	138	ARADIS WEST	RA in Progress
39	139	ARADIS EAST	RA in Progress
40	140	ARADIS NORTH	RA in Progress
41	141	ARADIS SOUTH	RA in Progress
42	142	ARADIS WEST	RA in Progress
43	143	ARADIS EAST	RA in Progress
44	144	ARADIS NORTH	RA in Progress
45	145	ARADIS SOUTH	RA in Progress
46	146	ARADIS WEST	RA in Progress
47	147	ARADIS EAST	RA in Progress
48	148	ARADIS NORTH	RA in Progress
49	149	ARADIS SOUTH	RA in Progress
50	150	ARADIS WEST	RA in Progress



Map Created: September 2004 by Pu. Tech's Cleanup Program
 File: Y:\CUAppDev\GIS\TCPP\MapDocs\Southwest_Map\CommencementBay\CommencementBayInset1.mxd



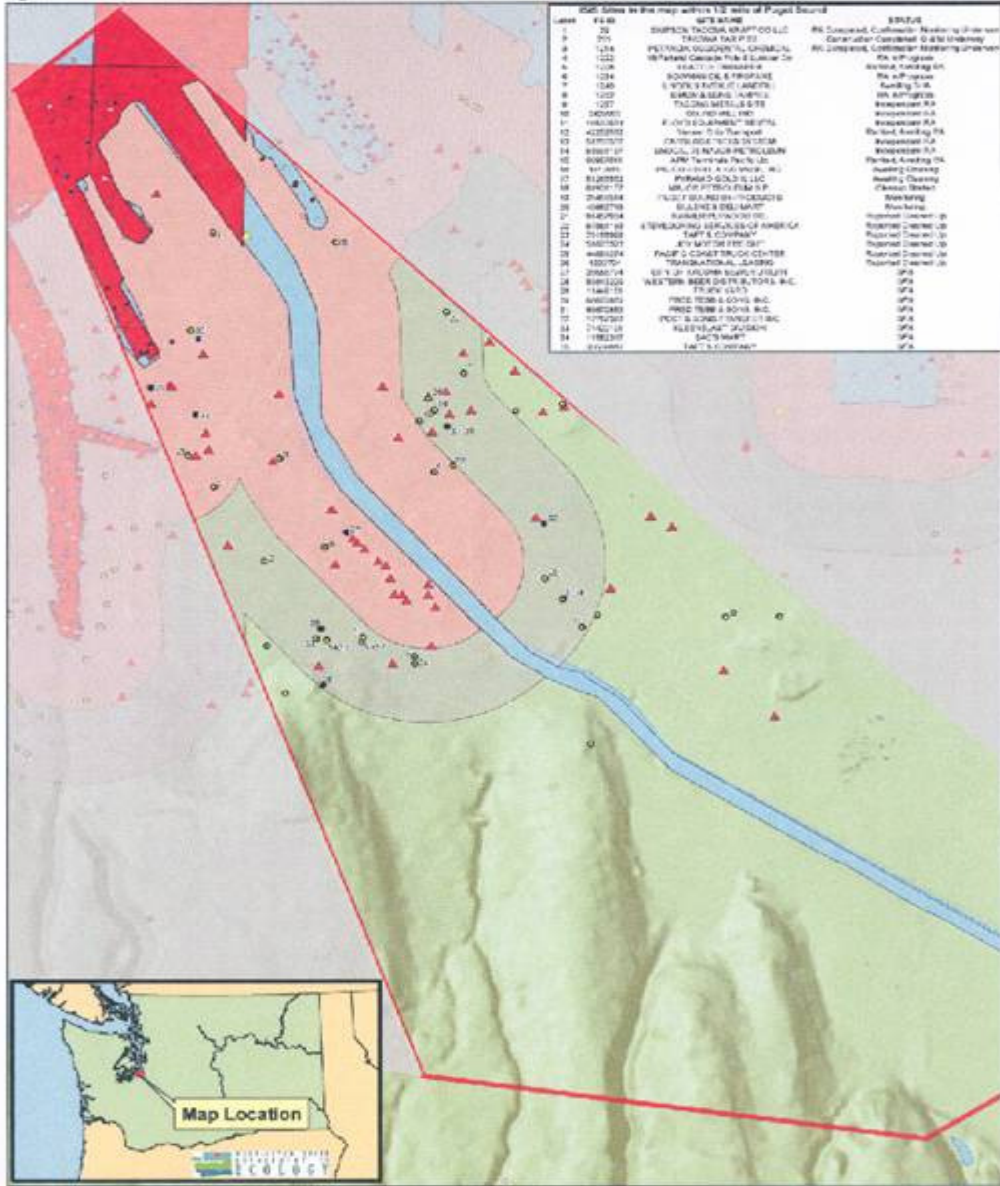
PSI: Commencement Bay Inset 2B



Map Created: August 2006 by the Toxics Cleanup Program
 File Y:\CU\AppDevTeam\GIS_TCP\PSI\mxd\Southwest_MaryColeman\Pierce_CommencementBay_2B.mxd



PSI: Commencement Bay Inset 2C



Call Sites in the map within the area of Project Bound

Layer	NAME	STATUS
1	20	SHORE TRENCH GROUP CO LLC
2	201	TACOMA TAP CO
3	1214	PETROLEUM DEVELOPMENT COMPANY
4	122	WESTERN CANADA TUB & LINE CO
5	1236	WALTON T. WILSON
6	1234	RODMAN & WINDUPE
7	1240	S. WYLLIE PARTNERSHIP
8	1227	BROWN & BROWN
9	1227	TULLOCH METALS LTD
10	30000	GOVERNMENT
11	1000001	ROYAL CANADIAN MOUNTED POLICE
12	422000	Town of Tacoma
13	500000	WASHINGTON TUGBOAT
14	500000	UNION OF MARINE TUGBOATS
15	500000	AMT TUGBOAT CO
16	500000	PHILIPPIAN A TUGBOAT CO
17	512000	PHILIPPIAN GOLD LLC
18	500000	AMT TUGBOAT CO
19	700000	TUGBOAT SERVICES COMPANY
20	500000	GOVERNMENT
21	500000	GOVERNMENT
22	500000	GOVERNMENT
23	500000	GOVERNMENT
24	500000	GOVERNMENT
25	500000	GOVERNMENT
26	500000	GOVERNMENT
27	500000	GOVERNMENT
28	500000	GOVERNMENT
29	500000	GOVERNMENT
30	500000	GOVERNMENT
31	500000	GOVERNMENT
32	500000	GOVERNMENT
33	500000	GOVERNMENT
34	500000	GOVERNMENT
35	500000	GOVERNMENT

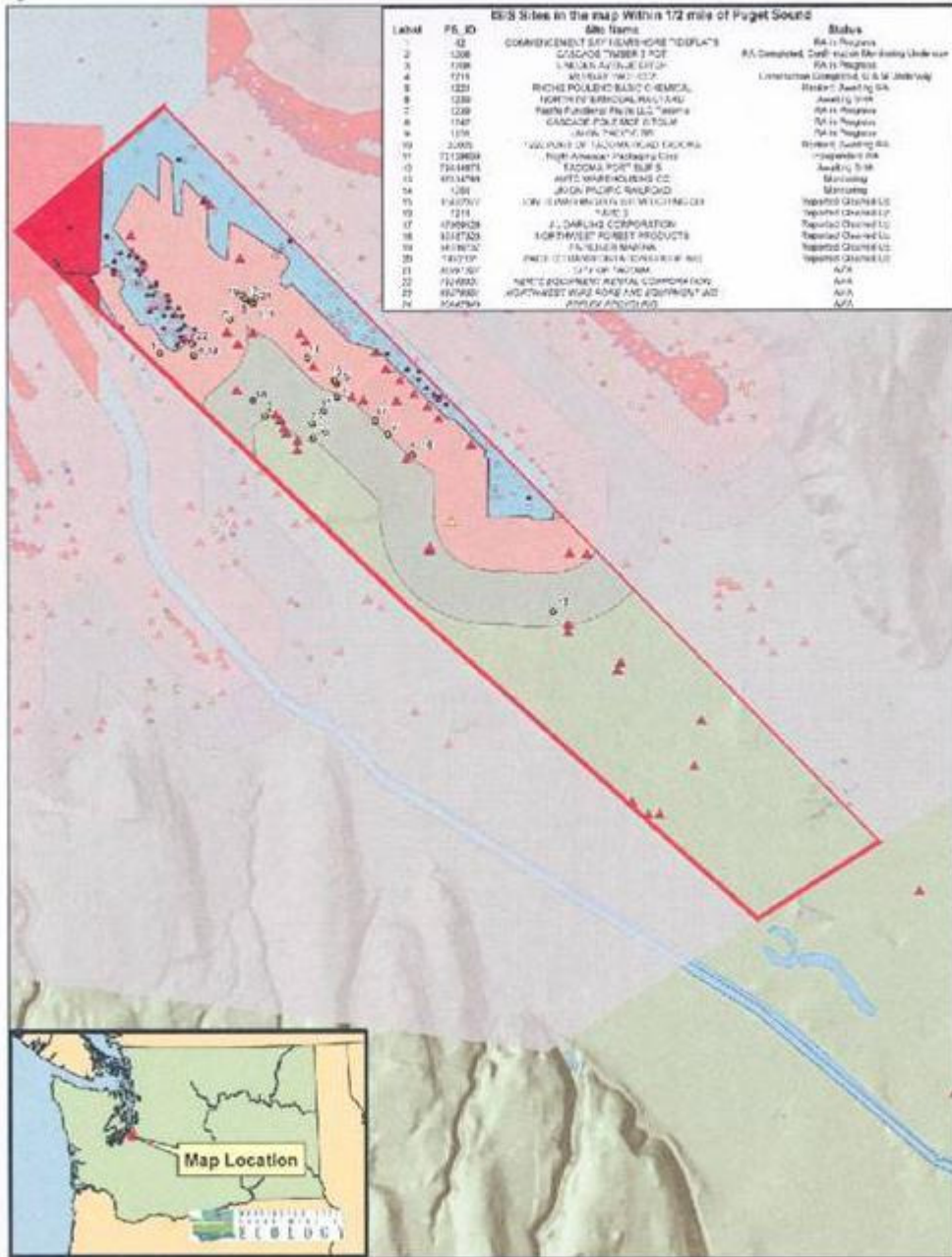


Map Features	Boatyard CSQ Exceedances	Goosduck Tracts	County Boundaries
● BQS - Active	● Boatyard SQS Exceedances	■ Open	▭ County Boundaries
● BQS - N/A	○ SEDQUAL Stations	■ Closed (Wastewater Discharge)	▭ Lakes & Puget Sound
■ Sediments in Process	● Chemical CSQ Exceedances	■ Closed (Other Pollution Source)	▭ Washington Rivers
■ Sediments Flooding	● Chemical SQS Exceedances	■ 303(d) Grids	▭ 0.25 Mile Selection Buffer
■ Sediments N/A	▲ NPDES Outfalls	■ Cold Sediment	▭ 0.5 Mile Selection Buffer
	▲ Industrial Wastewater Outfalls	■ Cold Water	▭ 0.061 0.2 0.3 Miles
		■ Cold Sediment	

Map Created August 2008 by the Toxics Cleanup Program
 File Y:\UCLAAppDevTeam\GIS_TCP\PSI.mxd\Southwest_MarvColeman\Pierce_CommencementBay_2C.mxd



PSI: Commencement Bay Inset 3A



Label	PS_ID	Site Name	Status
1	1308	COMMENCEMENT BAY TANKAGE "NO-DPLA'S"	RA Disposed, Conf. Status (See Inset Under map)
2	1308	COMMENCEMENT BAY TANKAGE "NO-DPLA'S"	RA Disposed, Conf. Status (See Inset Under map)
3	1308	COMMENCEMENT BAY TANKAGE "NO-DPLA'S"	RA Disposed, Conf. Status (See Inset Under map)
4	1715	ARIZONA TANK CO. LTD.	RA Disposed, Conf. Status (See Inset Under map)
5	1221	RICHIE POLISHED BULK O-REACTOR	Intermediate Completion, U & M Underway
6	1221	RICHIE POLISHED BULK O-REACTOR	Intermediate Completion, U & M Underway
7	1221	RICHIE POLISHED BULK O-REACTOR	Intermediate Completion, U & M Underway
8	1221	RICHIE POLISHED BULK O-REACTOR	Intermediate Completion, U & M Underway
9	1221	RICHIE POLISHED BULK O-REACTOR	Intermediate Completion, U & M Underway
10	1221	RICHIE POLISHED BULK O-REACTOR	Intermediate Completion, U & M Underway
11	2005	TWO PUNKS OF TACOMA ROAD CROSSING	RA Disposed, Conf. Status (See Inset Under map)
12	2005	TWO PUNKS OF TACOMA ROAD CROSSING	RA Disposed, Conf. Status (See Inset Under map)
13	2005	TWO PUNKS OF TACOMA ROAD CROSSING	RA Disposed, Conf. Status (See Inset Under map)
14	2005	TWO PUNKS OF TACOMA ROAD CROSSING	RA Disposed, Conf. Status (See Inset Under map)
15	2005	TWO PUNKS OF TACOMA ROAD CROSSING	RA Disposed, Conf. Status (See Inset Under map)
16	2005	TWO PUNKS OF TACOMA ROAD CROSSING	RA Disposed, Conf. Status (See Inset Under map)
17	2005	TWO PUNKS OF TACOMA ROAD CROSSING	RA Disposed, Conf. Status (See Inset Under map)
18	2005	TWO PUNKS OF TACOMA ROAD CROSSING	RA Disposed, Conf. Status (See Inset Under map)
19	2005	TWO PUNKS OF TACOMA ROAD CROSSING	RA Disposed, Conf. Status (See Inset Under map)
20	2005	TWO PUNKS OF TACOMA ROAD CROSSING	RA Disposed, Conf. Status (See Inset Under map)
21	2005	TWO PUNKS OF TACOMA ROAD CROSSING	RA Disposed, Conf. Status (See Inset Under map)
22	2005	TWO PUNKS OF TACOMA ROAD CROSSING	RA Disposed, Conf. Status (See Inset Under map)
23	2005	TWO PUNKS OF TACOMA ROAD CROSSING	RA Disposed, Conf. Status (See Inset Under map)
24	2005	TWO PUNKS OF TACOMA ROAD CROSSING	RA Disposed, Conf. Status (See Inset Under map)



Map Features	<ul style="list-style-type: none"> ● Bioassay CSL Exceedences ● Bioassay EQS Exceedences ○ SEDCOAL Station ● Chemical CSL Exceedences ○ Chemical EQS Exceedences ▲ NPTCH D-Subs ▲ Industrial Stormwater Outfalls 	Geospatial Data <ul style="list-style-type: none"> Open Closed (Wastewater Discharges) Closed (Other Pollution Sources) SOH2 Grids <ul style="list-style-type: none"> Cell Sediment Cell Water Cell Sediment 	<ul style="list-style-type: none"> County Boundaries Lakes & Puget Sound Washouan Rivers 0.25 Mile Selection Buffer 3.5 Mile Selection Buffer
---------------------	---	--	--

