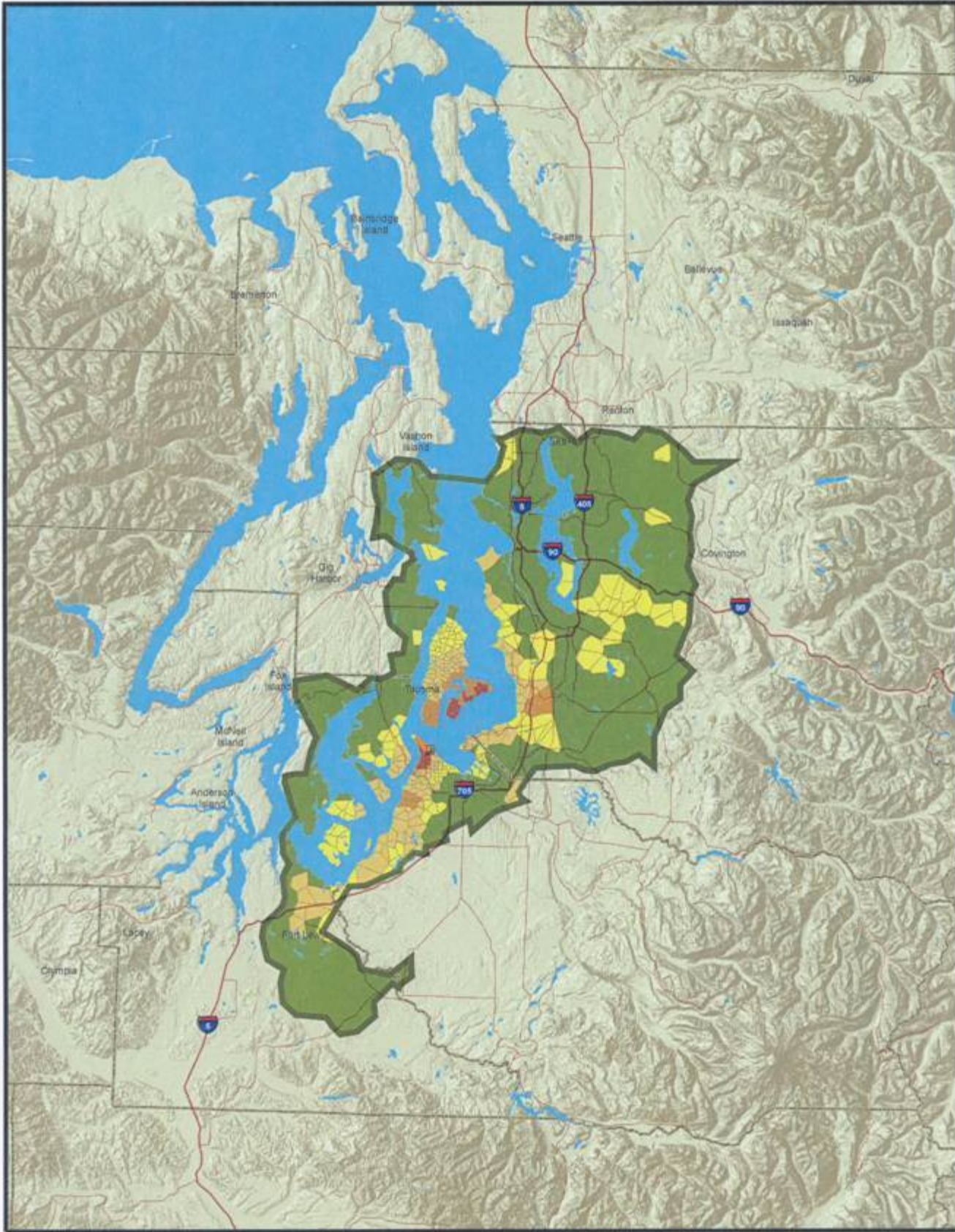


Tacoma Smelter Plume Project





The Department of Ecology and the local health departments in King, Pierce, Kitsap, and Thurston counties have been working since 1999 to: Determine the area, or "footprint" of soil polluted with arsenic and lead from copper smelter operations in Tacoma, where for almost 100 years, the Asarco Company operated a copper smelter. Air pollution from the smelter settled on the surface soil over a vast region - more than 1,000 square miles of the Puget Sound basin. Arsenic, lead, and other heavy metals are still in the soil as a result of this pollution.

Tacoma Smelter Plume: Boundary Map



Map Features

Arsenic Concentrations in Soil, 0-6 inches, 90th Percentile (mg/kg) in the TSP Study Area

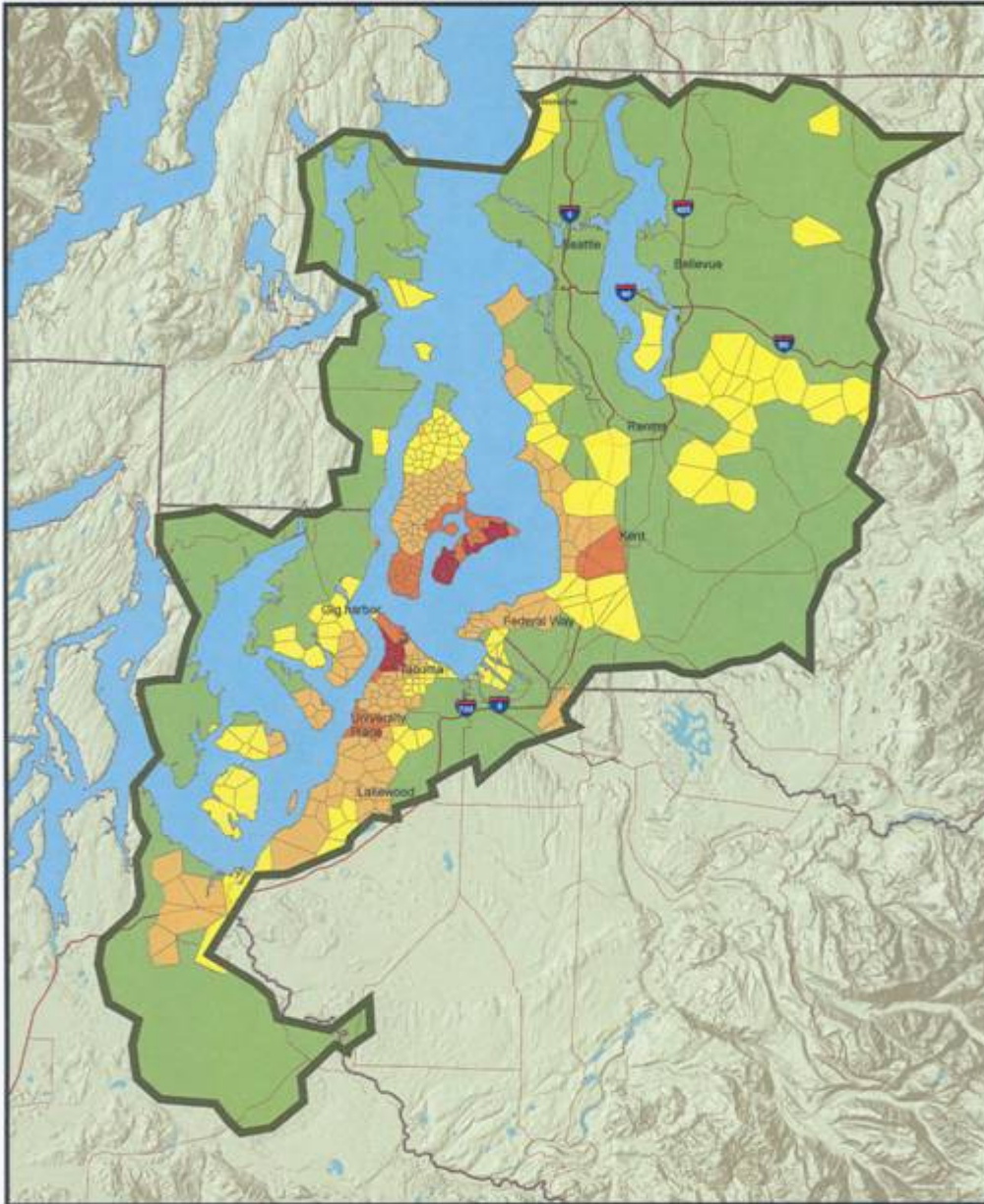
- | | | | |
|---|----------------|---|-------------------|
|  | TSP Study Area |  | County Boundaries |
|  | 20.1 to 40.0 |  | Highways |

012 4 6 8 10



Map Location

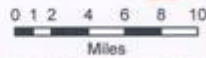
Tacoma Smelter Plume: Boundary Map



Map Features

Arsenic Concentrations in Soil, 0-6 inches, 90th Percentile (mg/kg) in the TSP Study Area

- | | | | |
|---|----------------|---|----------------------|
|  | TSP Study Area |  | Tacoma Smelter Stack |
|  | 20.1 to 40.0 |  | County Boundaries |
|  | 40.1 to 100.0 |  | Highways |
|  | 100.1 to 200.0 |  | Major Roads |
|  | > 200.0 |  | Puget Sound & Lakes |



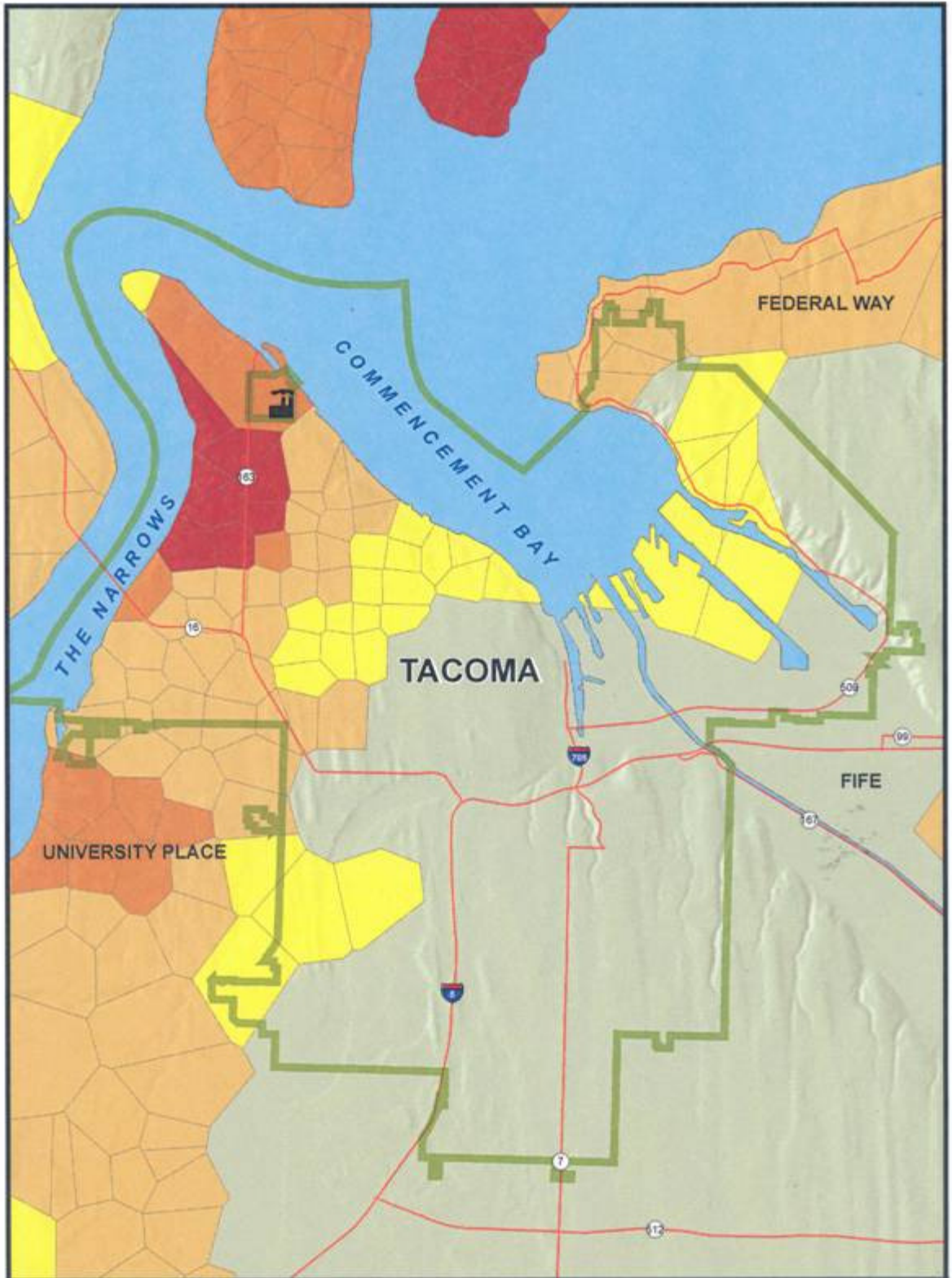
Map Created: September, 2008 by Tacoma Cleanup Program
File: Y:\CU\AppDevTeam\GIS_TSP\TSPwads\Tacoma Smelter Plume.mxd



Tacoma Smelter
Plume Project



City of Tacoma



Map Features

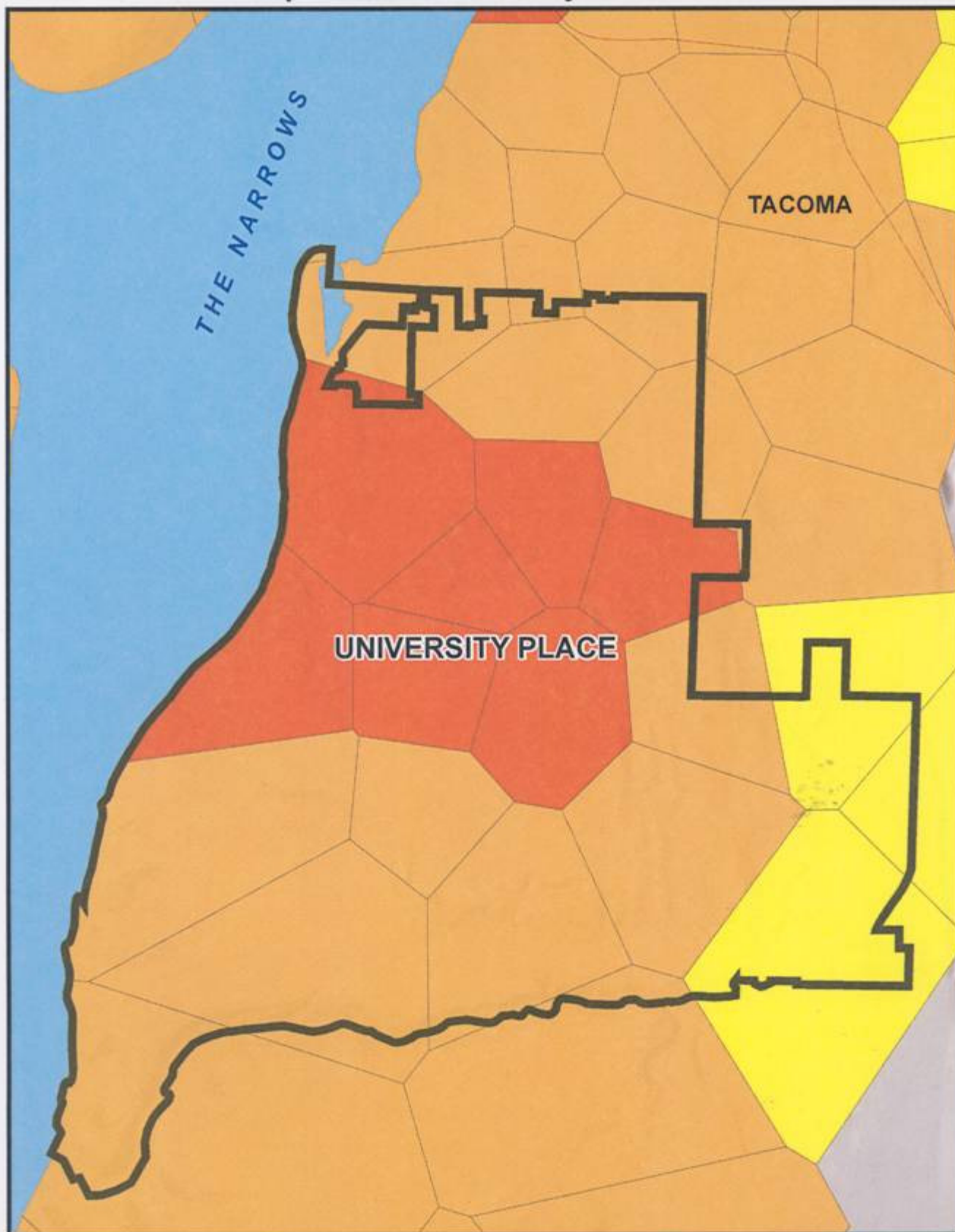
Arsenic Concentrations in Soil, 0-6 inches, 90th Percentile (mg/kg) in the TSP Study Area

- 20.1 ppm to 40.0 ppm
- 40.1 ppm to 100.0 ppm
- 100.1 ppm to 200.0 ppm
- > 200.0 ppm

- City: Tacoma
- Tacoma Smelter Stack
- Highways



Map Location: University Place



Map Features

Arsenic Concentrations in Soil, 0-6 inches, 90th Percentile (mg/kg) in the TSP Study Area



20.1 to 40.0



County Boundaries



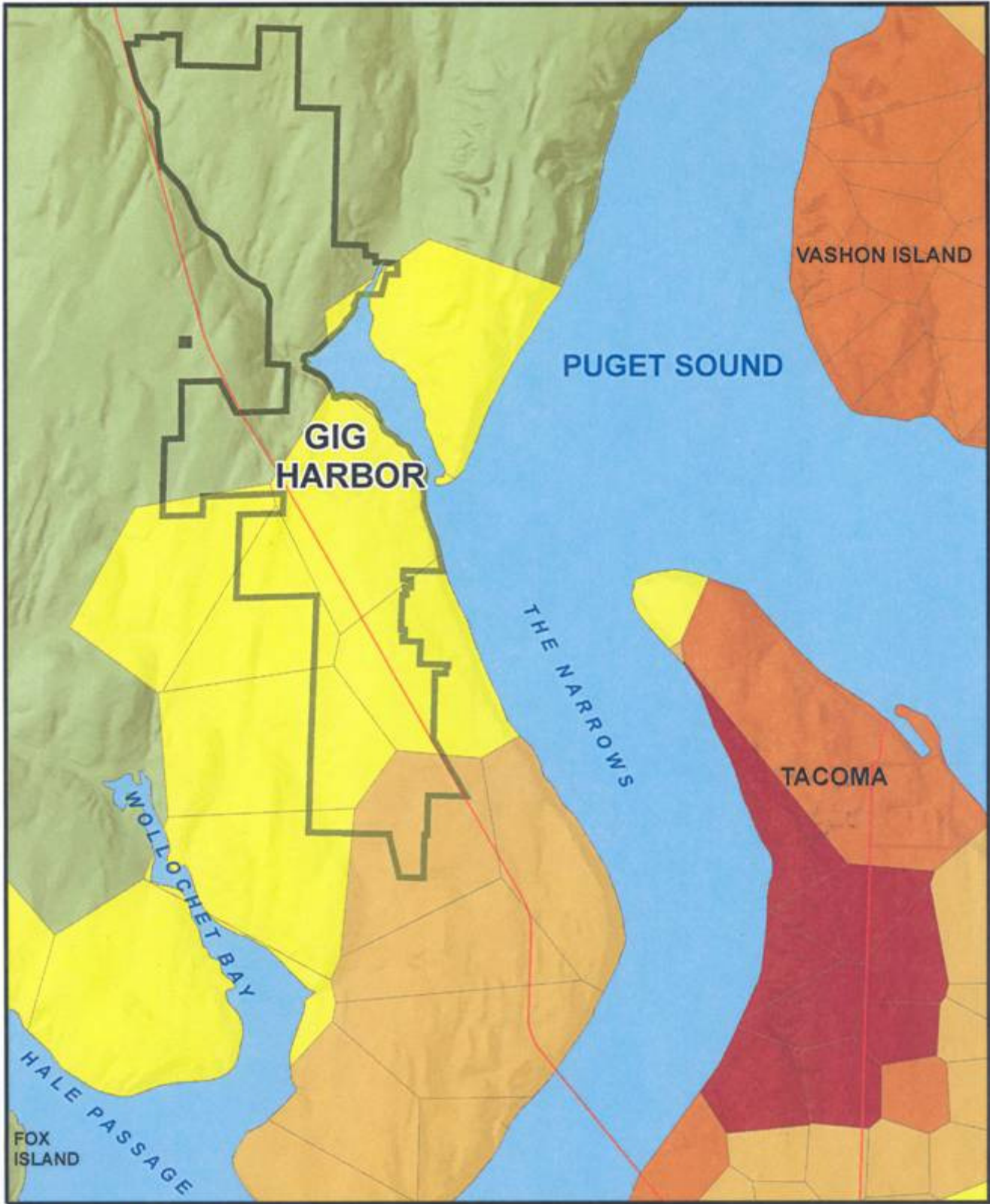
40.1 to 100.0



Highways



Map Location: Gig Harbor



Map Features

Arsenic Concentrations in Soil, 0-6 inches, 90th Percentile (mg/kg) in the TSP Study Area

- 20.1 ppm to 40.0 ppm
- 40.1 ppm to 100.0 ppm
- 100.1 ppm to 200.0 ppm
- > 200.0 ppm

- City: Gig Harbor
- TSP Study Area
- Highways



0 0.2 0.4 0.8 1.2 1.6