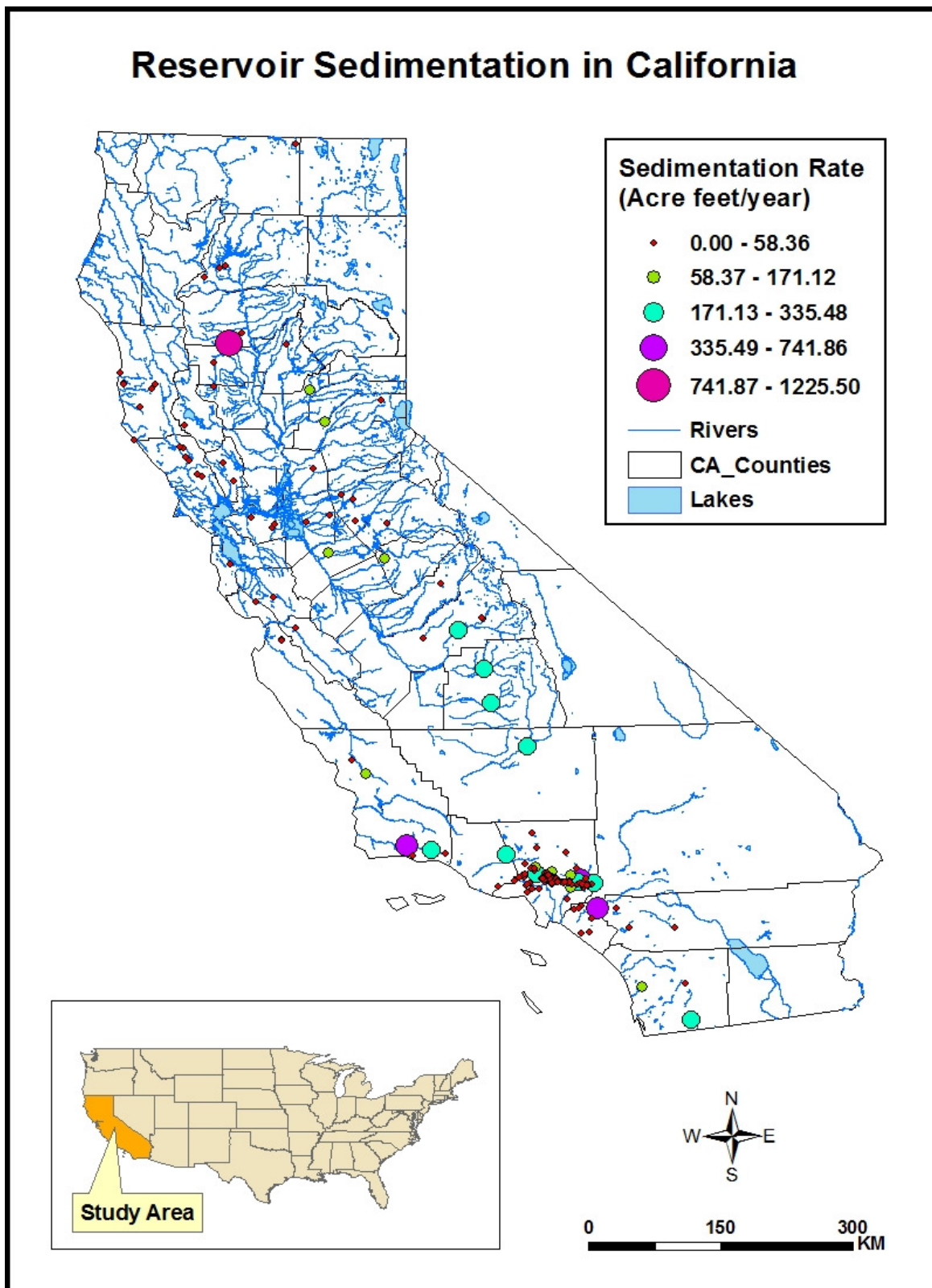


Reservoir Sedimentation in California



Data source: Personal communication through Stallard, R and Mixon, D.M. 2002-2003

Accumulation of sediment behind a dam is a universal phenomenon. Dendy and others (1973) and Dendy and other (1976) summarized the reservoir sedimentation data base of the United States through 1973. By relating reservoir properties to sedimentation rate, these papers have provided a guide for estimating reservoir sedimentation worldwide. Renwick (1996) summarized the database through 1975 and focused on sediment yields as related to the properties of the contributing watersheds (Stallard and others 2001; Mixon 2002). The Stallard et al (2001) report is based on the updated Reservoir Sedimentation Information System (RESIS) database referred to as RESIS-II. Each of these studies and research report (Kondolf and other 1993, Kondolf 1997) concluded that the deposition of stream-borne sediment causes a reduction of storage capacity of reservoirs.

We worked as a part of a project team with the University of California, Berkeley. I also want to thank Prof. Kondolf, University of California, Berkeley for providing funding for this research.